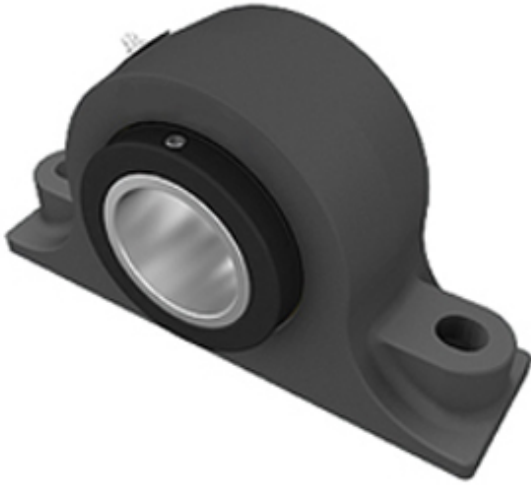




Handan Pangbo Bearings Sales Co., Ltd.d

3.25 Inch | 82.55 Millimeter x 5 Inch | 127
 Millimeter x 3.75 Inch | 95.25 Millimeter TIMKEN
 E-P2B-TRB-3 1/4 Pillow Block Bearings



E-P2B-TRB-3 1/4 Bearing 2D drawings and 3D CAD models

Bearing No. E-P2B-TRB-3 1/4

Category	Pillow Block Bearings
Inventory	0.0
Manufacturer Name	TIMKEN
Minimum Buy Quantity	N/A
Weight	20.88
EAN	0053893607306
Product Group	M06288
Number of Mounting Holes	2
Mounting Method	Concentric Collar
Housing Style	2 Bolt Pillow Block
Rolling Element	Tapered Roller Bearing
Housing Material	Cast Iron
Expansion / Non-expansion	Non-expansion
Mounting Bolts	7/8 Inch
Relubricatable	Yes
Seals	Double Lip Radial
Housing Configuration	1 Piece Solid
Inch - Metric	Inch
Other Features	Double Row Wide Inner Race With Set Screw
Long Description	2 Bolt Pillow Block; 3-1/4" Bore; 3-3/4" Base to Center Height; Concentric Collar Mount; Tapered Roller Bearing; 10-13/16" Minimum Bolt Spacing; 11-3/16" Bolt Spacing



Handan Pangbo Bearings Sales Co., Lt.d

	Maximum; Relu
Category	Pillow Block
UNSPSC	31171511
Harmonized Tariff Code	8483.20.40.80
Noun	Bearing
Keyword String	Pillow Block
Manufacturer URL	http://www.timken.com
Manufacturer Item Number	E-P2B-TRB-3 1/4
Weight / LBS	46
B	3.75 Inch 95.25 Millimeter
d	3.25 Inch 82.55 Millimeter
Nominal Bolt Center to Center	11 Inch 280 Millimeter
D	5 Inch 127 Millimeter
Bolt Spacing Minimum	10.813 Inch 274.65Millimeter
Bolt Spacing Maximum	11.188 Inch 284.175Millimeter
Actual Bolt Center to Center	0 Inch 0Millimeter
Shaft Size	3.25 in
Shaft Size Type	Imperial
Weight	46.0 lb
UPC Code	053893607306
Dimension B	5 in
Dimension L	14 in
Dimension A	3-1/2 in
Dimension J Min.	10-13/16 in
Dimension J Max.	11-3/16 in
Bolt Diameter	7/8 in
Dimension N	1 in
Dimension N ₁	1-3/16 in
Dimension H ₁	2-1/4 in



Handan Pangbo Bearings Sales Co., Ltd.

Dimension H ₂	7-1/2 in
Dimension d ₁	5-17/32 in
Dimension H	3-3/4 in
e	0.50
X (if F _a /F _r ≤ e)	0.87
Y (if F _a /F _r ≤ e)	1.71
X (if F _a /F _r > e)	0.7
Y (if F _a /F _r > e)	2.07
K Factor	1.19
C ₉₀ Dynamic Load Rating ¹	19600 lb
C ₀ Static Load Rating	108600 lb
F _{a-max} Maximum Permissible Thrust Load ²	5181 lb
F _{r-max} Maximum Allowable Slip Fit Radial Load ³	16000 lb
Max. Speed ⁴	1640 rpm
Note	Note: All units have a 1/8 pipe thread grease fitting The Maximum Permissible Thrust Load applies to conditions of slip fit with set screw mounting or in applications where a large moment loading occur